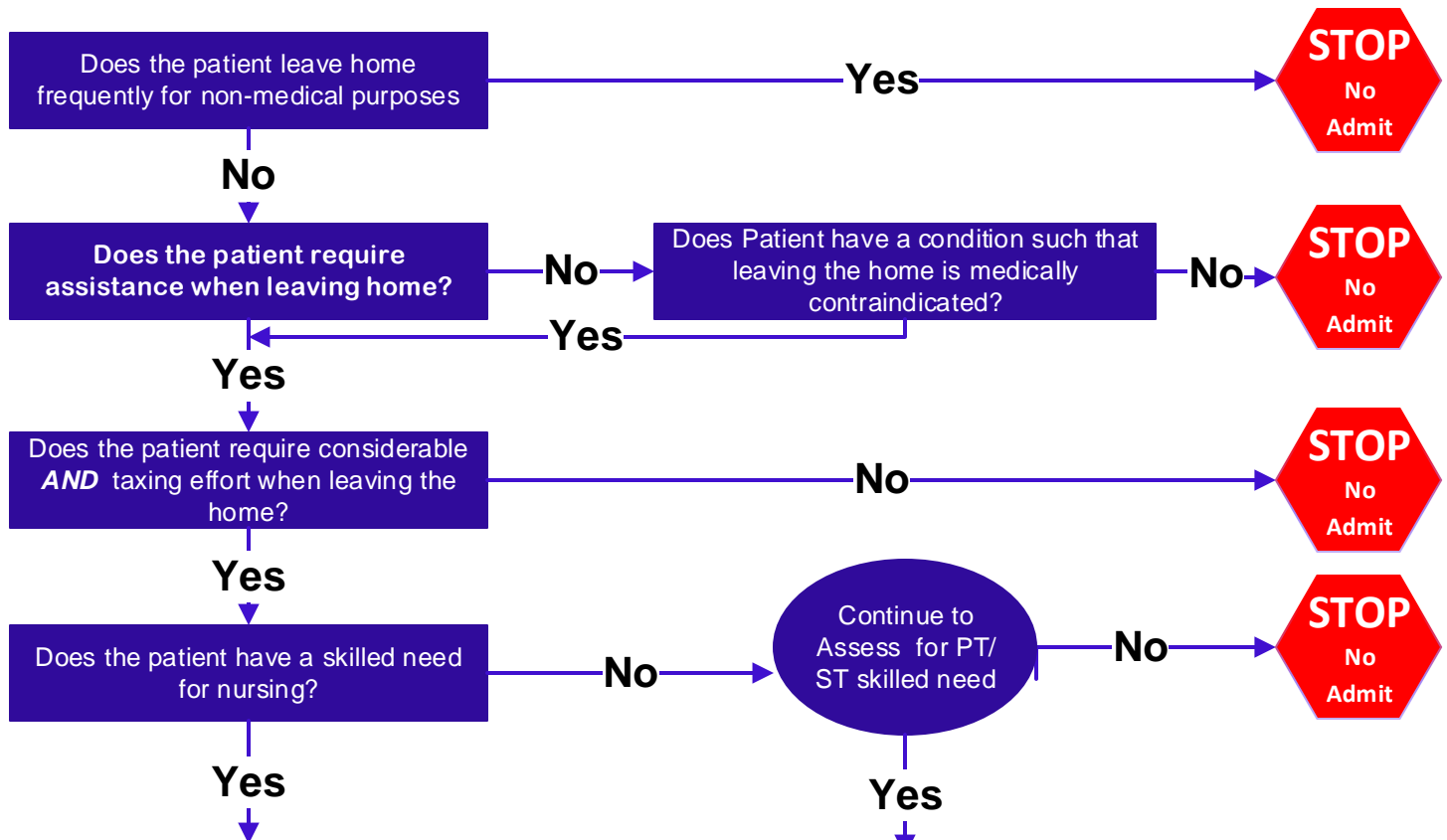


# Does Your Patient Meet Medicare Homebound Criteria?



A need for Skilled Nursing Services may occur due to one or more of the following:

- Hospitalization
- Recent, New or Exacerbated Dx
- Change in medications in the last 60 days
- New medication in the last 30 days
- Change in Primary caregiver providing care with a knowledge deficiency
- Skilled Nursing Care related to a treatment of an illness or injury that must be performed by a nurse:
  - Medication administration (other than oral)
  - Skilled Wound Care
  - Urinary Catheter Care
  - IV Therapy
  - Parenteral/Enteral nutritional support
  - Diabetic Care

Admit for Skilled Nursing Services

Does the patient require PT or ST considering the following?

- Recent marked decline in functional status (i.e. speech, ambulation, strength, endurance, inability to complete ADLs without assistance)
- Recent falls, fracture, stroke
- Need for home maintenance program to maintain current level of function.
- Financial, social or coping difficulties

Admit patient and obtain referral for Skilled Nursing Services, OT or MSW services

